

SAMSON CRACK-REPAIR SYSTEM



SAMSON FIXINGS

A two - component system consisting of stainless-steel
SAMSON HELICAL BAR and SAMSON BRICK GROUT.



APPLICATIONS

- A concealed reinforcement of masonry
- A method of reconnecting cracked masonry

ADVANTAGES

- SAMSON HELICAL BAR manufactured from 304 austenitic stainless steel, (316 available upon request)
- Non-Intrusive repair method
- Cost effective and more stable than other repair systems
- SAMSON HELICAL BARS and SAMSON BRICK GROUT provide excellent bonding characteristics within the masonry
- SAMSON HELICAL BARS have a superb combination of axial strength and flexibility
- Absorbs localised stress
- Minimises the likelihood of further cracking
- Eliminates the need to rebuild
- Permanent repair
- A fast, cost effective and economical solution
- No special skills required for installation

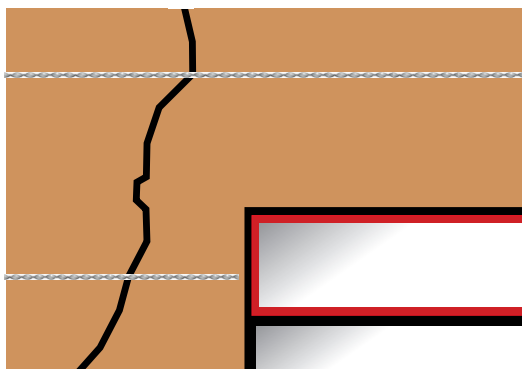
SAMSON HELICAL BAR RANGE

- 4.5mm - 6mm - HC7mm - 8mm -
HC8mm - HC9mm - 10mm - 12mm
(All from 1 to 10 metres)

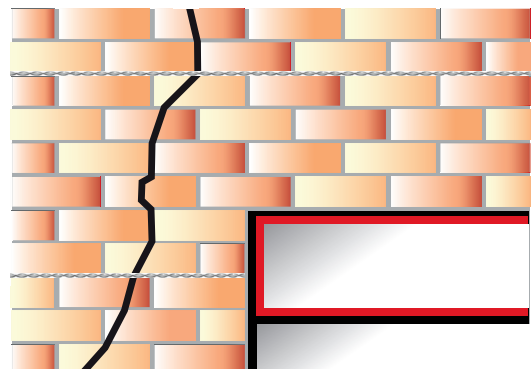


SAMSON BRICK GROUT

- 1.5 Litre - 3 Litre & 6 Litre Tubs



Crack-Stitching rendered or plastered wall
using SAMSON HELICAL BAR



Crack-Stitching a conventional brick wall using
SAMSON HELICAL BAR

info@samsonfixings.com

IT'S IN THE BUILDING!

www.samsonfixings.com

SAMSON FIXINGS LTD

UNIT 7 BEECH COURT, WILLOW ROAD, ST IVES, HUNTINGDON, PE28 9RF, UNITED KINGDOM • COMPANY REG. 11972793

Please always wear the appropriate safety and protective clothing when installing fixing and anchor products. Always observe the necessary Health & Safety guidelines.

© All text copyright. Above information is given as guidance only and should always be verified by a suitable engineer.

The above information is given in good faith, and may be subject to alteration at any time without prior notification.



© 2023-08-30

PAGE 1/4



INSTALLING



Chasing the wall



Injecting the bead of grout

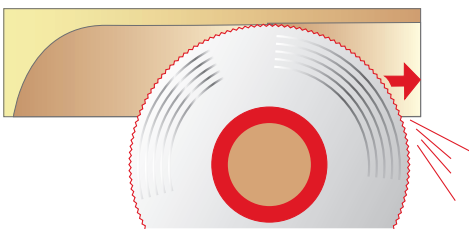


Laying in the bar

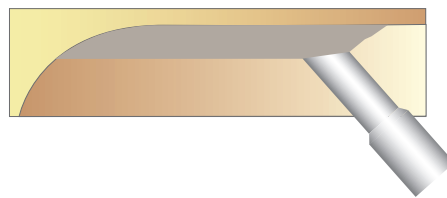


Push the bar into the grout and then inject another bead of grout

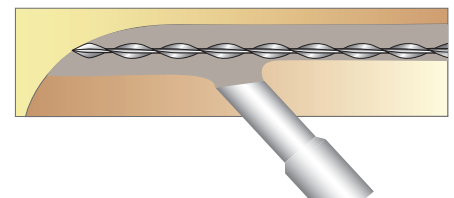
HOW TO



1. Using the correct chasing equipment, cut horizontal slots into the masonry to the required width, depth and length. Clean out thoroughly with clean water.



2. Apply continuous bead of **SAMSON BRICK GROUT** into the created slots with the applicator gun & nozzle.



3. Insert length of 6mm **SAMSON HELICAL BAR** and push into grout. Apply a further bead of **SAMSON BRICK GROUT** allowing enough room in slot to re-point with a matching mortar. Then conceal the slot with **SAMSON COLOUR-MATCH MORTAR**.

INSTALLATION CHARACTERISTICS

WALL THICKNESS AND APPLICATION		SLOT DEPTH	DEPTH OF BAR
102mm Wall	Crack Stitch	30 - 35mm	20mm
215mm Wall	Crack Stitch	40 - 45mm	30mm

Vertical spacing every 4 to 6 brick courses. (300 – 450mm)
Please contact the **SAMSON** technical department for advice.

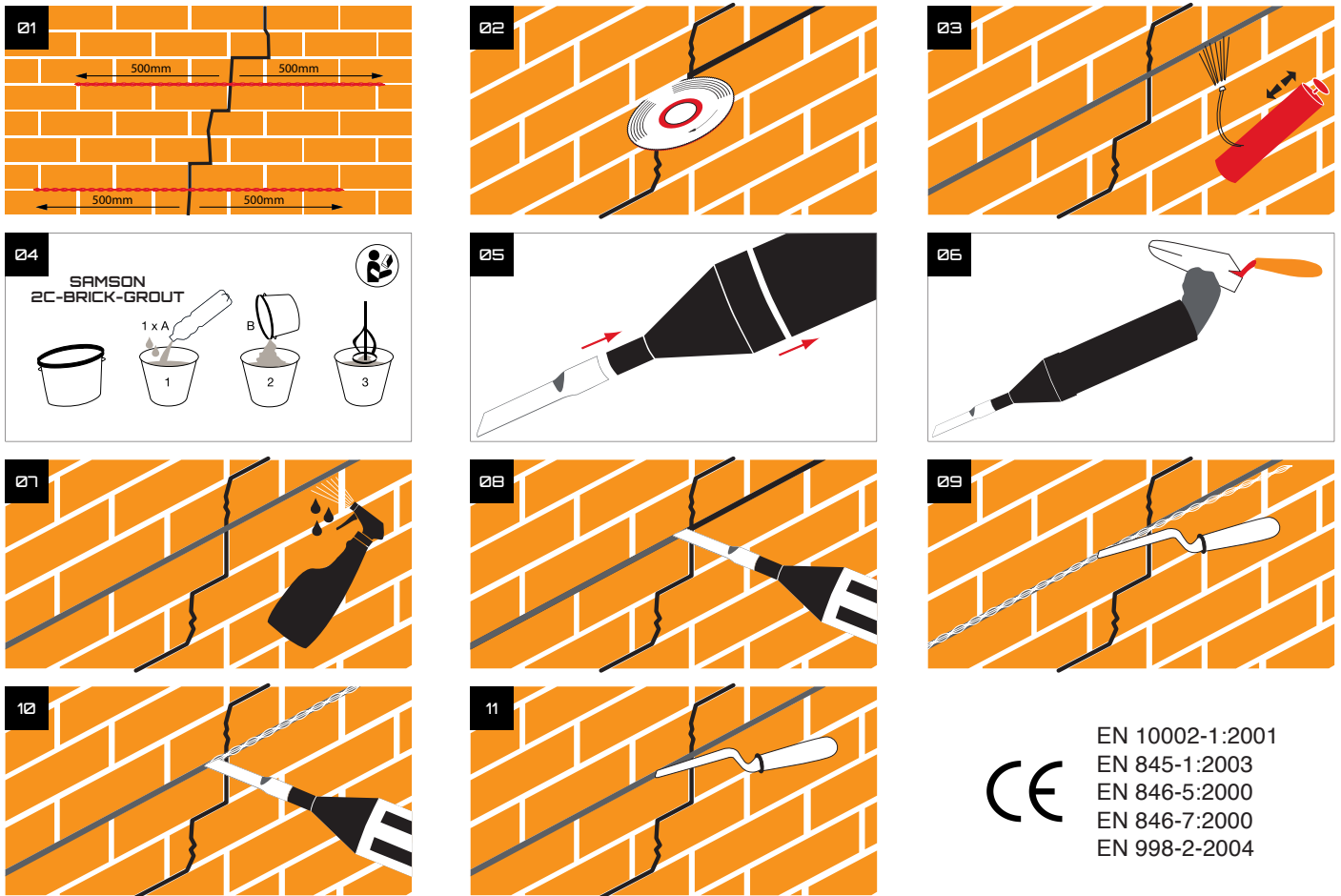
Installation Tools & Equipment


- Suitable Chasing Tool
- PPE Clothing and Protection
- Crack-Stitching Pointing Gun and Nozzle
- Mixing Paddle and Finger Trowel
- Fill the crack with **SAMSON-FILL 300** and make good with **SAMSON COLOUR-MATCH MORTAR**

NOTE

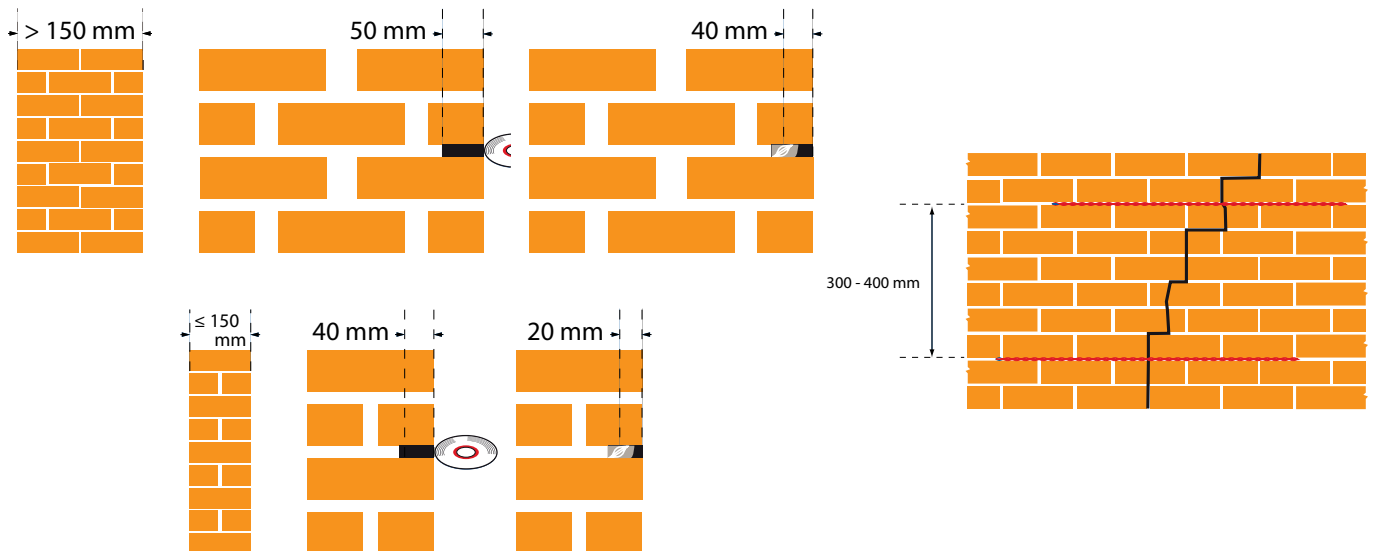
1. Bar to extend 500mm beyond the end of any opening or crack.
2. Where cracks are within 500mm of corners or reveals bar is to be bent and bonded around the corner to recommended distance.
3. When joining **SAMSON HELICAL BAR**, ensure that it is overlapped by at least 500mm.
4. Crack-Stitching cannot cure the cause of the crack. Crack-Stitching can only stabilise the symptoms of the cause.
5. Always seek the advice of a structural engineer before undertaking any structural repair.

INSTALLATION DETAILS




 EN 10002-1:2001
 EN 845-1:2003
 EN 846-5:2000
 EN 846-7:2000
 EN 998-2:2004

INSTALLATION CHARACTERISTICS



SAMSON CRACK-REPAIR SYSTEM KIT



CONTENTS

- 5 No 6mm x 1.000mm SAMSON HELICAL BAR
- 1 No 1.5 Ltr. Tub of SAMSON 2C-BRICK-GROUT
- 1 No Crack-Stitching Gun
- 1 No Black Plastic Nozzle
- 1 No Mixing Paddle
- 1 No Finger Trowel



SAMSON CRACK-REPAIR SYSTEM BOX



CONTENTS

- 10 No 6mm x 1.000mm SAMSON HELICAL BAR
- 1 No 3 Ltr Tub of SAMSON 2C-BRICK-GROUT
- 1 No Crack-Stitching Gun
- 1 No Stainless Steel Nozzle
- 1 No Mixing Paddle
- 1 No Finger Trowel



TESTING

- CE LOK 1118/A/08, ITB KATOWICE
- CE 0908-BPR-SN.072.01.M-11
- University of Waterloo (Canada)
- Bath University (Canada)
- Pennsylvania State University (USA)
- Imperial College London (UK)
- Ceram Building Technology
- EN 10002-1:2001
- EN 845-1:2003
- EN 846-5:2000
- EN 846-7:2000
- EN 998-2:2004

